

mindray

CL-1000i

Chemiluminescence Immunoassay System

Simple yet Robust



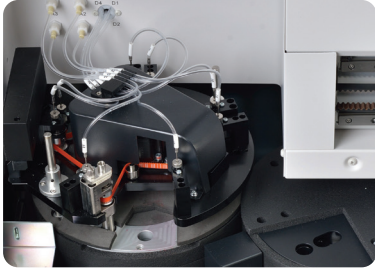


CL-1000i



CL-1000i

Chemiluminescence Immunoassay System



Enhanced Reaction System

- 4-phase magnetic separation with precisely controlled temperature
- Consistent performance reliability with enhanced PMT detection system
- Non-touch vortexer mixing for reaction solution without any contamination

Simple yet Ro



Sample & Reagent Probe

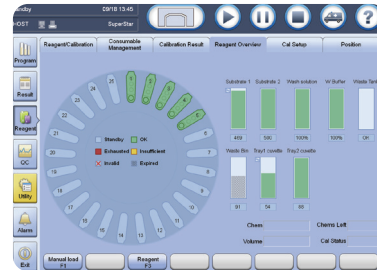
- Precisely controlled syringe motors offer high precision aspiration
- Intelligent liquid level detection, clot detection, vertical and horizontal collision protection
- Efficient interior & exterior probe wash with high pressure wash buffer
- Programmable enhanced probe wash with detergent



Sample Handling

- Samples loading and offloading continuously by sample racks
- Unified sample racks with detachable adaptor
- Rack status real-time indicating on lane numbers
- STATs prioritized fast

bust



Intuitive Software Interface

Unified software interface, significantly reduces training effort
Smooth interchange by intuitive software navigation
Easy access to touch screen monitor with swing arm (optional)



Consumables Management

Random access for cuvette loading without pause or stop
88*2 cuvettes in one batch, 200 cuvettes per waste bag
Cuvettes & waste bag status real-time indicating



Reagent & Substrate Handling

Easy for reagent & substrate handling, liquid reagents ready-to-use
2°C~8°C non-stop refrigerated reagent carousel featured 25 positions
Same reagent pack size with CL-2000i (50 tests/100 tests per pack)
Reagents stable on board for up to 56 days

Test Menu

Thyroid

FT3
FT4
T3
T4
TSH
Anti-TG
Anti-TPO
Tg
rT3
TRAB*

Infectious Disease

HIV Combo
HBsAg
Anti-HBs
HBeAg
Anti-HBe
Anti-HBc
Anti-HCV
Anti-TP (Syphilis)
HBeAg quantitative*
Anti-HBc IgM*

Fertility

Total β -HCG
FSH
LH
Prolactin
E2
E3
TESTO
PROG
Free testosterone*
17-OH PROG*
SHBG*
AMH*

Tumor marker

CEA
AFP
CA125
CA15-3
CA19-9
FPSA
TPSA
NSE
CYFRA 21-1
CA72-4
PG I
PG II
SCCA
HE4
ProGRP
CA50
CA242

Bone

Metabolic
Intact PTH
Calcitonin
Vitamin D total

Cardiac

CK-MB
Myoglobin
Troponin I
BNP

Diabetes

Insulin
C-peptide

Adrenal Function

DHEA-S
Cortisol
ACTH

Liver Fibrosis

LN
HA
PIIINP
CIV

ToRCH

Toxo IgG*
Toxo IgM*
Rubella IgG*
Rubella IgM*
CMV IgG*
CMV IgM*
HSV-1/2 IgG*
HSV-1/2 IgM*
HSV-1 IgG*
HSV-2 IgG*

Anemia

Ferritin
Vitamin B12
Folate
RBC Folate

Hypertension

Angiotension I*
Angiotension II*
Renin
Aldosterone

Growth Hormone

hGH*
IGF-1*

Inflammation

PCT

DS' Screening

PAPP-A*
Free β -HCG*

*: in development

Technical Specifications

General Information

Throughput	Up to 120 tests/hour
Measurement Principle	Micron superparamagnetic particles platform with alkaline phosphatase (ALP) labeled reagents and AMPPD substrate

Sample Assembly

Sample Feeder	Continuous sample loading and offloading by sample racks
Sample Rack	10 positions per rack, same as BS-800/BS-2000/CL-2000i series
Sample Capacity	Up to 60 samples in one batch
Sample Probe	Steel probe, liquid level detection, clot detection, horizontal and vertical collision protection
Sample Volume	10 μ l~200 μ l, with increment of 1 μ l
Sample Dilution	Automatic dilution with 1:2 ~ 1:80

Reagent Assembly

Reagent Disk	25 reagent positions, continuous loading, real-time mixing for magnetic particles
Cooling System	2°C~8°C
Reagent Pack	50 tests per pack, 100 tests per pack
Reagent Scanning	Built-in/external bar code reader scanning
Reagent Probe	Steel probe, liquid level detection, bubble detection, horizontal and vertical collision protection
Reagent Volume	20 μ l~200 μ l, with increment of 1 μ l

Substrate System

Substrate Bottle	300/500 tests per bottle, bottom piercing
Substrate Loading	Capable of continuous loading during testing
Substrate Heating	Constant heating
Aspiration Volume	200 μ l

Magnetic Separation Unit

Separation Assembly	4-phase magnetic separation
Temperature	Accuracy: 37 \pm 0.3°C, fluctuation: \pm 0.2°C

Measurement and Reaction System

Detection Mode	Photon counting
Signal Detector	Photomultiplier (PMT) photon counter
PMT Calibration	LED reference module
Reaction Carousel	75 positions
Temperature	Accuracy: 37 \pm 0.3°C, fluctuation: \pm 0.2°C
Mixing Unit	Non-touch vortexer mixing

Cuvette Loading and Waste Collection

Cuvette	Disposable plastic cuvette
Cuvette Loading	88 cuvettes per tray, two trays can be loaded in one batch, continuous loading and offloading
Waste Collection	Waste container, 185 cuvettes per box

Working Conditions

Power Supply	110V/115V~, 60Hz; 220V-240V~, 50Hz; 220V/230V~, 60Hz
Input Power	2000VA
Operating Temperature	15°C~30°C
Relative Humidity	35%RH~80%RH, without condensation
Dimension	Main Unit: 1400mm*760mm*600mm (W*D*H) Weight: 225kg
Altitude Height	-400m~4000m

Contact us

Qatar Office - Beamed Trading (BMT)

- 📍 Building No. 39 - Hilal Area - Airport Street
- ✉ sales@beamedtrading.com
- 🌐 www.beamedtrading.com
- ☎ +974 4412 6795
- 📠 +974 4421 5175
- 📄 207014
- 🌍 Doha - Qatar

Jordan Office - Tbilisi For Equipment (TBI)

- 📍 Anam 2 building - Al Yasmin - Jabal Arafat Street
- ✉ sales@beamedjordan.com
- 🌐 www.beamedtrading.com
- ☎ +962 6 420 12 77
- 📠 +962 6 420 12 77
- 📄 710031- Postal Code: 11171
- 🌍 Amman - Jordan

Follow us

@beamedtrading

