

The DUOLITH® SD1 in orthopaedic practice

Combined shock wave therapy with large focal zone and oscillating shock waves

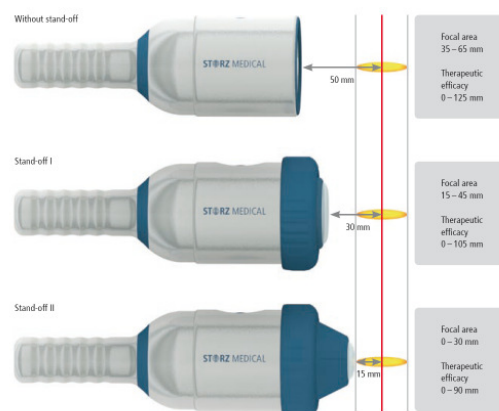
The DUOLITH® SD1 from STORZ MEDICAL AG has quickly established itself as an indispensable instrument in my orthopaedic practice. The combination of focused and radial shock waves has allowed me to significantly expand the range of treatments I offer. In addition to such traditional problems as tendinosis and calcified bursitis, ESWT is also increasingly being used in my practice for treating myofascial pain syndrome. Using trigger point shock wave therapy, I am now able to successfully treat chronic pain syndromes of the musculoskeletal system, such as back, neck and shoulder pain. Symptoms are often significantly reduced after just one treatment session. Patients are almost completely free of pain after four to five treatment sessions lasting around 15 to 20 minutes each.

I started out eight years ago with a purely radial shock wave device. Over the years, however, ESWT has become ever more important in my everyday practice, with the result that three years ago I decided to purchase the DUOLITH® SD1 combined shock wave system. It was specifically developed for professional orthopaedic trigger point and shock wave therapy and offers me considerable advantages over previously available shock wave devices. One of these is the ability to conclude by smoothing the muscle using the radial applicator as recommended by Travell and Simons for classical trigger point therapy. Furthermore, with the DUOLITH® I am able to differentiate my treatments from those with purely radial devices increasingly used in physiotherapy.

Two important criteria for success

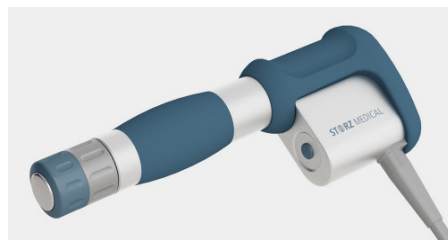
Two important criteria contribute to the success of treatment using the DUOLITH® – the device utilises both radial and focused shock wave technologies. Each handpiece has its own specific properties and optional functions which are important for successful combination treatment. Both forms of treatment can also, however, where necessitated by the presenting symptoms, be used individually.

- The focused handpiece has a large focal zone, which ensures a high degree of accuracy. This also allows it to be used diagnostically to locate trigger points. No time-consuming measurements or changes in penetration depths are required. The applied shock waves reach their target deep in the tissues, even at low energy settings. This significantly reduces the risk of injury as a result of excessive energy in the zone of application.



Focused handpiece: Different penetration depths

- The radial handpiece is equipped with both a basic shock transmitter and – what is for me indispensable – oscillating shock transmitters (D-Actor technology). D-Actor technology transmits mechanically generated oscillations and radial shock waves into the muscle tissue in concert. This allows muscles and tissue to be treated significantly faster and with more lasting effect than with standard radial shock wave transmitters. The new ceramic shock transmitter is also of great interest, as it does not require gel and can be used with patients with particularly sensitive skin.



Radial handpiece

There are many different private billing options which can be utilised with combination therapy, with the result that the DUOLITH® SD1 represents both a successful and a lucrative treatment option. ESWT is also profitable as an 'IGel service' (health services not covered by German health insurance companies). The high degree of patient satisfaction and the speed and reliability of success with ESWT have made it much easier for me to market it within my practice.

Author: Dr. Helfmeyer, Orthopädie Praxis Inntal, Brannenburg / Bavaria

Source: Orthopädische Nachrichten 05/2009

STORZ MEDICAL
www.storzmedical.com

English Translation of original article in German »Der Duolith®SD1 in der orthopädischen Praxis« in Orthopädische Nachrichten 05/2009